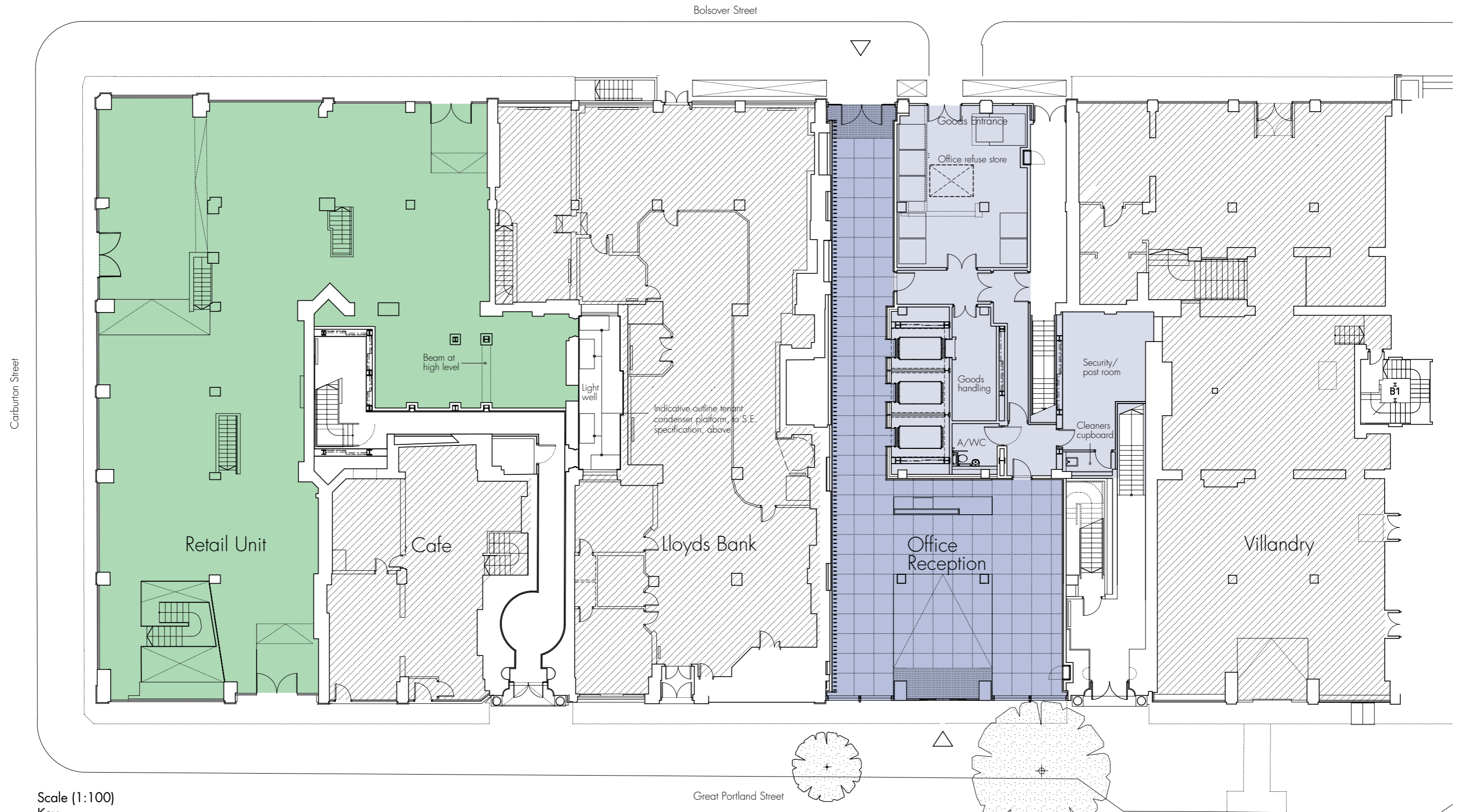


# 180 GREAT PORTLAND STREET W1

## Ground floor



Scale (1:100)  
Key

<span style="display:inline-block; width:15px; height:10px; background-color:#76c7a0;"></span> Retail	4,693 sq ft	(436 sq m)
<span style="display:inline-block; width:15px; height:10px; background-color:#6b8cbe;"></span> Office Reception	1,905 sq ft	(177 sq ft)